



**L**OVELY  
**P**ROFESSIONAL  
**U**NIVERSITY

*Transforming Education Transforming India*

INDIA'S LARGEST UNIVERSITY\*

# LOVELY PROFESSIONAL UNIVERSITY

\*In terms of number of students on a single campus

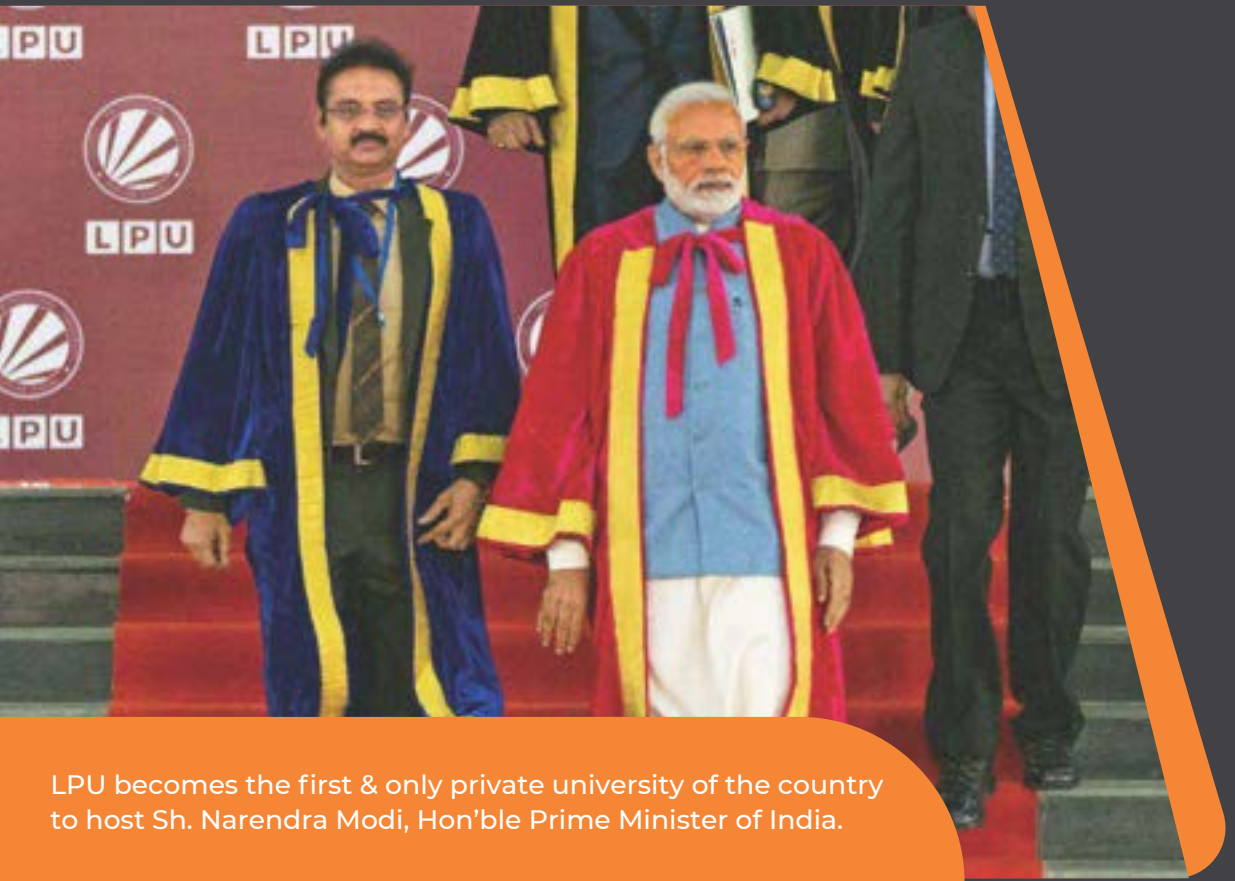


Think**BIG**

# International Booklet

[www.lpu.in/international](http://www.lpu.in/international)

Recognized by UGC under Section 2(f) of the University Grants Commission Act, 1956 vide Notification No. F.9-10/(CPP-1)



LPU becomes the first & only private university of the country to host Sh. Narendra Modi, Hon'ble Prime Minister of India.

# WHY CHOOSE LPU?

**30,000+**

Full time students

**25,000+**

On campus accommodation for students and faculty

**3,000+**

International students from 50 countries

**4,000+**

Research papers are filled by LPU students and faculty

**600+**

Acres Campus

**200+**

International university TIE-UPS for student exchange programmes









Completely wi-fi campus

# WORLD IN A CAMPUS

One of the Asia's largest academic campuses spread across hundreds of acres. Hostel accommodation for 25,000 students, 6 storey library, dedicated research block, 8 storey Uni-mall, fully Wi-Fi, state-of-the-art laboratories, smart classrooms, and much more.



# STUDY IN **INDIA**

## HOME TO THE WORLD'S SECOND-LARGEST HIGHER EDUCATION SYSTEM

### VAST ACADEMIC PROGRAMME

There could be several reasons for foreign students to choose India as their next study abroad destination. Apart from top universities and vibrant culture, international students can experience the vast Indian education system spread across an array of courses. The country boasts of several top world ranking universities however, it is the vast choice of programmes offered in the country that makes it one of the top reasons to study in India for international students.

### STUDENT FRIENDLY CITIES

Finding a perfect student friendly city in a foreign country is another one of the top reasons to study in India. If students decide to take the leap and study abroad in India, they are likely to study in one of the flourished cities in the country. India is home to over 400 cities spread across the nation, a proof of establishment of the enormous country. Each city has its unique traditions, cultures and values to take back home.

### COST EFFECTIVE EDUCATION

Studying abroad in a completely different country becomes a major concern for international students and the cost of living in a foreign country can seem daunting to many at first. In a country like India, cost of living is the last thing to worry about. The cost of education in India is way lower compared to giant education hubs such as the US, UK, Australia and EU.

### CAMPUS LIFE

Studying in India, for any foreign student can be an intimidating prospect, because it isn't just a land of numerous languages, but also of people from different backgrounds and traditions. The best part of campus life in India is the majority of universities in the country are residential in nature, which means foreign students get to reside on a secure and close knit environment. Campus life in LPU is one of the top reasons to study in India, where international students receive ample opportunities to interact and socialize in extracurricular activities.





# WHY STUDENTS PUT US **FIRST**

INDIA'S MOST INTERNATIONALIZED CAMPUS WITH STUDENTS FROM 50+ COUNTRIES

## CURRICULA

LPU can boast of having one of the most updated globally benchmarked curricula, which are innovative, flexible, and highly integrated. For achieving these objectives, LPU keeps in constant touch with the industry for feedback which is essential for the development and updating of the curricula.

## OPPORTUNITY

Studying at LPU will help you build the future you want to see, by giving you both the skills to achieve the career of your dreams, and the attitude & belief to change the world.

## EDUCATION

Being India's Largest University with world class infrastructure and cutting edge academics, the education we offer you is exceptional, rigorous, ambitious and inspired by the world changing research.

## CAMPUS LIFE

The Culture of Punjab has its own unique fragrance. Here hospitality binds people together in bond of love. We are fortunate to be based in one of the most beautiful part of the country. It is the best place to live, study and research.

## PLACEMENT PATHWAYS

Each individual is unique and approaches life in a different manner, so we allow them to choose their own placement pathways out of corporate jobs, government jobs, higher studies, research, entrepreneurship and study abroad to prepare them for life.

## EARN WHILE YOU LEARN

LPU runs 'Earn While You Learn' programmes for providing employment to its students. The Student Employment Cell provides students with on-campus and off-campus employment opportunities. During free time, student can take-up jobs like Teaching Assistants, Library Assistants, Computer Service Assistants, Data Entry Operators, Project/Lab Assistants, Assistant Coaches/Trainers, Campus Guides, Tele-Support/ Call Centre Assistants, Career Counsellors and Marketing/Sales Executives etc.







UNI-HOSPITAL



UNI-MALL













SWIMMING POOL



SHOOTING RANGE

# CAMPUS FACILITIES

 INDIA'S LARGEST UNIVERSITY CAMPUS	 HUNDREDS OF HI-TECH LABS	 9000+ LATEST COMPUTERS	 6 STOREYED LIBRARY	 INDIA LARGEST AUDITORIUM
 25000+ HOSTELLERS (WORLD'S LARGEST)	 ON-CAMPUS SHOPPING MALL	 300+ FOOD KIOSKS/CAFETERIA	 FULLY WI-FI CAMPUS	 MULTI CUISINE MESS AND RESTAURANTS

## ON CAMPUS HOSPITAL

The campus has a 24 hours 30 bed hospital which is staffed with resident well qualified doctors, medical officers, Nurses ,lab technicians, dieticians and physiotherapists. The campus hospital is fully equipped to provide healthcare services to the university residents and provides the following services: Handling Emergencies, Dental Clinic, Eye Checkup, Clinical Laboratory, First Aid, Dedicated Ambulances, Medical Referrals for specialized services, and Pharmacy Shops for dispensing medicines at discounted prices.

## ON CAMPUS UNIMALL

The Uni-Mall is a multi-storey, air-conditioned complex housing a departmental store and various shops selling apparel, lifestyle accessories, electronic gadgets, books, stationary, and sports & entertainment items, with a photo studio and a beauty salon also. It is a Student resource centre to meet their daily needs, it ensures that students get everything they need right here on the campus.

## GYM FACILITY

(Separate for Boys and Girls) Special Gym facility is being introduced at three different locations exclusively for hostellers at 50% subsidized fee. In addition to special Gym facility as mentioned above, Open Gym (without charges) is also available.

## CLEAN & GREEN ENVIRONMENT

LPU is one of the greenest campuses in the country. The greenery makes for a great learning environment and promotes creativity.

## INDOOR STADIUM & SWIMMING POOL

With facilities like Indoor stadium , Olympic size swimming pool, warm up pool, shooting range, squash court, badminton court, volleyball court, basketball court etc. at 50% subsidized fee.

## IN HOUSE MENTOR SUPPORT

The residential faculty & staff provide after-hours guidance and support to the students, in case they need any academic or life advice.

# RANKINGS AND ACCREDITATIONS

LPU has been ranked amongst the top universities in the world by leading magazines, newspapers, TV channels and associations.

## International Memberships/ Accreditations



International Association of Universities (IAU), France



Association of Commonwealth Universities (ACU), UK



Accreditation Council for Business Schools and Programs (ACBSP), USA



The Institute of International Education (IIE), New York, USA

## Recognitions and Accreditations



Ranks LPU **36th** amongst Top Universities of India Both Government and Private 1000-1200 Band – World Wide

**2nd** in Business & Economics

**8th** in Clinical & Health

**9th** in Computer Science

**10th** in Engineering & Life Sciences



LPU Ranked **62nd** amongst all Government and Private Universities in India

**12th** in Architecture

**23rd** in Pharmacy

**24th** in Law

**37th** in Management

**66th** in Engineering



LPU Ranked **3rd** in India in the Atal Ranking of Institutions on Innovation Achievements



First private University in India to get ICAR accreditation for agriculture programs With GPAP of up to **3.75 (PG)**, **3.72 (UG)** and overall GPAC of **3.42**



LPU is empaneled as an authorized partner institute under the prestigious Study in India scholarship program – Initiative by the Ministry of Education, Government of India.



ASSOCHAM



Economic Times



Financial Express (Indian Express Group)



Electronics for You



Digital Learning



Star News





# INTERNATIONAL STUDENTS SUPPORT

WITH LPU'S DESIGNATED DIVISION OF INTERNATIONAL AFFAIRS (DIA), WE ENSURE THAT ALL OUR INTERNATIONAL STUDENTS RECEIVE SPECIALIST SUPPORT AND ENJOY THEIR STAY AT LPU.

## PRE-ARRIVAL SERVICES

Even before you decide to join the University our team of counselors help the student :

- Choose the appropriate program
- Completing the application process
- Issuing the (offer/admission) letter
- Guiding you to the visa process
- Updating you with the reporting/ induction schedule

## INDUCTION PROGRAM

- During first few days we will give you chance to meet other international students.
- Take you on a tour around the city where you will be living.
- Providing the information you need to make the most of while studying at the university.

## ENGLISH LANGUAGE SUPPORT

Few of our students also join from countries where English is not their first language. We understand these students need support during initial days in the university. The department of student welfare runs various English language programs for the students.

## FRRO AND VISA

As per the Indian government mandate all the International students (except Bhutan and Nepal) have to register online with the local Foreigners Regional Registration Officer (FRRO) department. We have a dedicated team to provide you support and to also ensure in extending the visa whenever required.

## SCHOLARSHIP FOR INTERNATIONAL STUDENTS

To attract the best international talent, LPU offers scholarships up to 50%. To know more about it visit [www.lpu.in/international](http://www.lpu.in/international)

## HEALTH CARE AND MEDICAL INSURANCE

LPU provides health care policy to all the International students, which activates 45 days from the start of program/arrival date (whichever is earlier). This policy can help you in getting limited financial support in case of a medical exigency.





# INTERNATIONAL TIE-UPS

WITH LPU'S DESIGNATED DIVISION OF INTERNATIONAL AFFAIRS (DIA), WE ENSURE THAT ALL OUR INTERNATIONAL STUDENTS RECEIVE SPECIALIST SUPPORT AND ENJOY THEIR STAY AT LPU.



## SUMMER STUDY PROGRAMS

Summer programs are short duration programs of 2-4 weeks on various specialisations. It adds to the international exposure of the students.

## SEMESTER EXCHANGE PROGRAMS

LPU students have option to finish the last half part of their degree programs at our partner universities. Students visit partner universities for 6 months to 1 year for completing their semesters abroad.

## OVERSEAS STUDY MISSIONS

Overseas study missions bring you right into the heart of multi-national organisations around the world, giving you current insights on how they function through site visits. You will also go on a networking journey with prominent industry leaders, opening doors to a world of opportunities.

## GLOBAL EXPOSURE

We regularly invite faculty from accredited institutes from across the world and it helps our students to understand diverse cultural and educational contexts.

### USA

- Kent State University
- University of Missouri
- California State University
- Otterbein University
- Iowa State University
- University of North Alabama
- Washburn University
- Wayne State University
- Livingstone College
- Virginia International University

### UK

- University of East London
- Birmingham City University
- Teesside University
- Haringey University
- University of Huddersfield
- University of Wolverhampton

### CANADA

- Mc Gill University
- Memorial University of Newfoundland
- University of Fraser Valley
- Trent University
- Cape Breton University
- The University of Winnipeg

### AUSTRALIA

- Curtin University
- Swinburne University
- La Trobe University
- Central Queensland University
- Royal Melbourne Institute of Technology

### NEW ZEALAND

- Waikato Institute of Technology
- Unitec Institute of Technology

### CHINA

- Pingxiang University China
- Zhongyuan University of Technology
- Chengdu Normal University
- Ludong University
- Hebei University of Chinese

### GERMANY

- Macromedia University

### FRANCE

- IMT Lille Douia
- INSEEC
- CZECH REPUBLIC
- University of Ostrava

### FINLAND

- JAMK University of Applied Sciences

### SWITZERLAND

- University of Business and International Studies

### SPAIN

- Universidad Europea De Madrid
- Escuela Superior De Imagen Y Sonido CES

### RUSSIA

- Synergy University

### UAE

- Skyline University

### MALAYSIA

- Universiti Putra Malaysia

### INDONESIA

- University of Indonesia

### MONGOLIA

- Mongolian University of Science and Technology

and many more...



# INTERNATIONAL DIGNITARIES VISITS

At LPU we have been honoured by the visits of distinguished leaders, statesmen/ women from across the world. Their visits are an endorsement of LPU's academic credentials & have enhanced its global recognition as an educational institution of international standing.



Professor Abdul Mannan, former Chairman University Grant Commission (UGC), Bangladesh at LPU



Honoris Causa on His Holiness Dalai Lama on the occasion of 5th Convocation at LPU



LPU Chancellor Mr. Ashok Mittal, Pro Chancellor Ms. Rashmi Mittal conferring Honoris Causa Degree on Dr. (Mrs.) Ameenah Gurib-Fakim, then Hon'ble President of Mauritius at LPU



LPU Chancellor Mr. Ashok Mittal, conferring Honoris Causa Degree on Dr. Pakalitha Bethuel Mosisili then Hon'ble Prime Minister of Lesotho Kingdom on the occasion of 5th Convocation at LPU



His Excellency Late Mr Kwesi Amissah-Arthur, then Vice President of Republic of Ghana at LPU

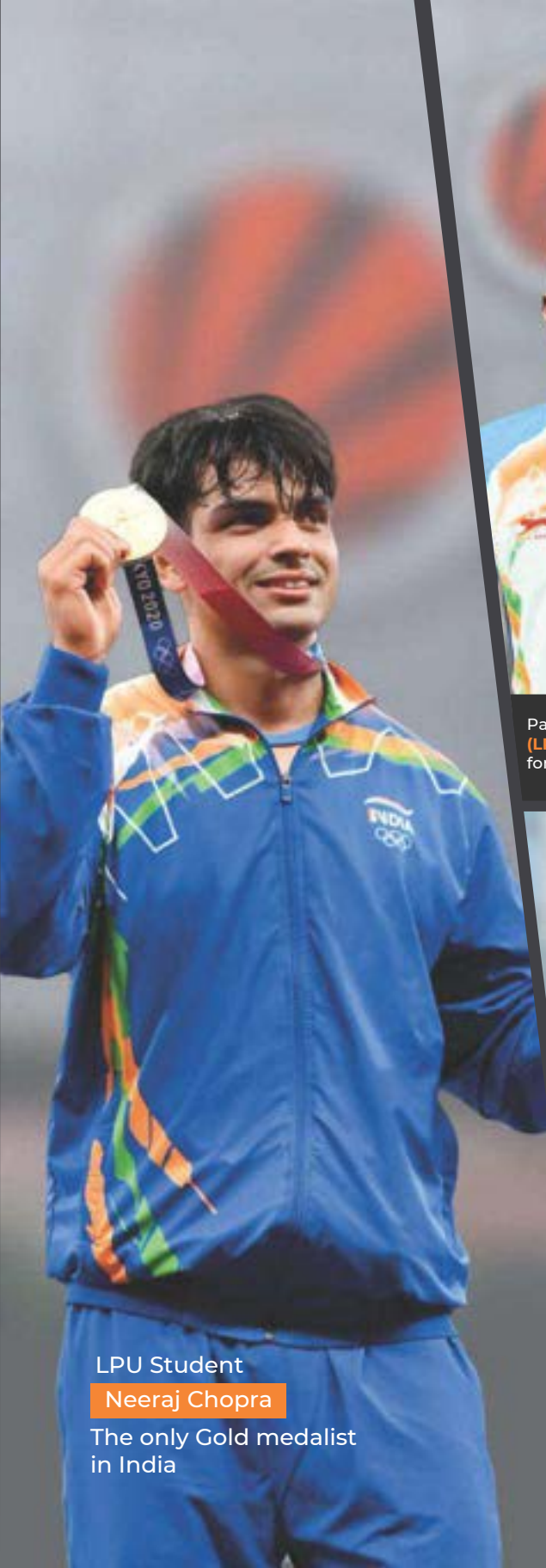


9 Ambassadors and Diplomats from 6 Nations graced the 10th edition of LPU's international mega fest 'ONE WORLD 2019'



Shri Pranab Mukherjee, Hon'ble President of India, conferring Doctor of Letters (D.Litt) Honoris Causa Degree on His Excellency, Mr. Hamid Karzai, then President of Islamic Republic of Afghanistan





LPU Student  
**Neeraj Chopra**  
The only Gold medalist  
in India



Paralympian **Nishad Kumar**  
(LPU student) won Silver Medal  
for Men's High Jump category



LPU student **Bajrang Punia**  
won Bronze Medal at  
Olympics for Wrestling



LPU student **Manpreet Singh**  
Captain of Indian Hockey team  
won Bronze Medal at Olympics

# LPU MAKES INDIA PROUD!



Varun Kumar



Shamsher Singh



Dilpreet Singh



Mandeep Singh



Harmanpreet  
Singh



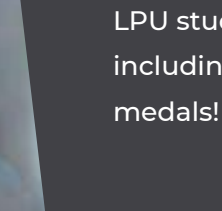
Hardik Singh



Rupinderpal Singh



Lalit Kumar



Simranjeet Singh

13 out of 14 LPU students in Tokyo Olympics 2020  
won sparkling Olympic medals for India- 1 Gold,  
1 Silver & 2 Bronze.

**LPU student Neeraj Chopra  
is the only Gold Medalist of India!**

Paralympian Nishad Kumar won the Silver Medal.  
LPU students Bajrang Punia & Indian Hockey learn  
including Captain Manpreet Singh also won 2 Bronze  
medals!

**Indian Hockey Team with 10 LPU students** players created history by  
winning Olympic hockey medal after a wide gap of 41 years





Students having realtime experience in Google Lab



Perkin Elmer- LPU centre of material characterization

JEOL-LPU Centre of Excellence for Advanced Microscopic Studies within campus



Airlines and Tourism Students in action inside an on-campus simulated plane

# INDUSTRIAL TIE-UPS

## GOING BEYOND THE CLASSROOM, CLOSER TO THE INDUSTRY!

Summer training, full-term optional/ compulsory internships, 'On-the-job' training, study tours, and skill enhancement events and workshops are extensively integrated in the LPU curricula. These expose students to real work environments and provide them an opportunity to apply their learning in real life situations. On-site experience is gained by our students through industry internships in corporate giants like Cognizant, Microsoft, Infosys, ABB, ISRO, Simplex, to name a few.





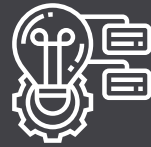
# LEARNING AT LPU

WE ENSURE THAT YOU GET READY FOR FUTURE CORPORATE LIFE THROUGH OUR UNIQUE AND PRACTICAL STYLE OF TEACHING



## WORKSHOPS

Watching a sporting event on television can be enjoyable, but actually seeing it live, surrounded by cheering fans, provides a much more encompassing experience. Teaching and learning can become inherently spontaneous and student-centred when moved from the confines of the classroom into the world at large. Students get the opportunity to explore real challenges and acquire a deeper knowledge to resolve the issues.



## LIVE PROJECTS

Learning experiences outside the classroom are inherently interdisciplinary. Live projects are integral part of LPU curricula. Our pedagogy is oriented towards giving students hands on experience through labs in association with Industries.



## GUEST LECTURES

LPU maintains a relationship with an impressive network of partners, both individuals and business partners, who offers many opportunities throughout the year for students to visit a local business or meet with a particular individual whose expertise and success inspires and educates. Getting a chance to meet with our guests often helps students identify their own personal path to pursue.



## LIVE CASE STUDIES

The use of case studies in classrooms serves several important purposes. By exposing students to numerous cases of varying complexity, students gradually evolve from possessing a cursory understanding of the material to an expertise in the subject. The case study is effective in non-traditional learning environments where important lessons are taught outside of the classroom.



## FIELD TEACHING

Field experiences are unmatched in their learning potential. Field experiences early in a student's career can be formative and can inspire students to continue in a field.



## COMMUNITY ENGAGEMENT

Greater learning potentials and community benefits rest in more intensive forms of service learning projects. These projects, typically designed by both faculty and community partners, allow for students to learn in highly effective ways while helping a community address its needs.



## PERSONALITY DEVELOPMENT

Special programmes are conducted to improve student's personality. Several training sessions on soft skills etiquettes, presentation skills, personal grooming etc. are held, wherein all students participate.



## RICH INTELLECTUAL POOL

LPU boast of rich pool of intellectual capital. Lot of focus has been laid while selecting the finest faculty. The faculty shares industrial experience, modern ways of teaching e.g. web based learning, smart classrooms trainings and also share their experience and research with the students and make sure that this transfer of knowledge becomes fruitful and inefaceable experience for the scholars.



# CAMPUS LIFE

AT LPU, STUDENTS HAVE EVERY OPPORTUNITY TO LIVE THEIR PASSIONS. SPORTS, THEATRE, ART, CHESS, FITNESS, DANCE, OR WHATEVER ELSE THEY WISH TO PURSUE. EVERYTHING IS MADE POSSIBLE BY THE 150+ CLUBS THAT LPU NURTURES, AND MANY PLATFORMS IT PROVIDES.







## ACCOMMODATION @ LPU

AT LPU WE KNOW THAT OUR ACCOMMODATION WOULD BE THE SECOND HOME TO MANY OF OUR INTERNATIONAL STUDENTS

LPU residential facility is perhaps one of the largest facilities in the world as it can house 25,000 students inside it. Our hostels are comfortable, affordable and convenient with common areas that provide the perfect environment to relax, socialise, study and learn. Students can choose from shared rooms to individual apartments.

- Separate residential facility for boys and girls within the campus
- Rooms with attached washroom, bed, table, chair and wardrobes
- Air cooling / Air Conditioning facility in each room (as opted for)
- Arrangement for power supply through dedicated 24 hours hotlines
- Geysers in each room to provide hot water during winters (scheduled timings)
- On campus laundry service is provided to hostel residence (optional).

*Note: Each room will get fixed number of electric units each month and usage over and above the fixed number of units would be charged on actual basis to the occupants. Complete detail is available on the website [www.lpu.in](http://www.lpu.in)*

### A SAFE AND SECURE ENVIRONMENT

LPU campus is made secure with 4500 CCTV cameras and 400 security personnel, round the clock.

### AVAILABILITY OF DIFFERENT CUISINES

In order to provide students with more flexibility and increase choice of food varieties, the university is providing multiple cuisine options. Along with mess there are plenty of food stalls that offer different varieties of food.

### FREE WIFI

All the students in the university's accommodation have access to free wifi facilities

### MULTIPLE ACTIVITY AND CLUBS

It is a very lively campus that sees a lot of extra curriculum activities and events on almost daily basis, thus ensuring a strong bond with friends.

### SUPPORT SYSTEM

Most of our students are away from their homes and families for the very first time. But they don't miss their homes because of our caring and secure support system.



# FRESHMAN MERIT SCHOLARSHIP

We are dedicated to enrolling the most talented students and offer generous merit scholarships to back that up. These awards are based on past academic performance and potential to excel at the university.

**UPTO 50% SCHOLARSHIP\***

\*to check your scholarship, visit  
<http://www.lpu.in/international/scholarship.php>

or scan QR code



Apply online today  
@ [www.admit.lpu.in](http://www.admit.lpu.in)



- 01 | Register to generate Login ID and Password
- 02 | Fill the application form
- 03 | Download Offer Letter
- 04 | Submit Provisional Registration Fee as mentioned in the Offer Letter
- 05 | Download Acceptance Letter and apply for Visa (Visa not required for Nepal/ Bhutan citizens)
- 06 | Report to University as per your program reporting schedule available on [www.lpu.in/international](http://www.lpu.in/international)
- 07 | Team LPU will be waiting to welcome you

For more information: <https://www.lpu.in/international>

Regarding admission support write to us at [int.admissions@lpu.co.in](mailto:int.admissions@lpu.co.in)

Whatsapp: +919780005961



# PROGRAMME DETAILS

## Programmes After 10th/(O Level)

Discipline	Programme Name	Duration
Engineering	Diploma (Engg.) Electronics & Comm. Engg. (ECE)	3 yrs.
Engineering	Diploma (Engg.) Computer Sc. & Engg. (CSE)	3 yrs.
Engineering	Diploma (Engg.) Mechanical Engg. (ME)	3 yrs.
Engineering	Diploma (Engg.) Civil Engg. (CE)	3 yrs.
Management	Diploma in Business Administration	3 yrs.
Architecture	Diploma in Architectural Assistantship	3 yrs.
Fashion Design	Diploma in Fashion Design	3 yrs.
Medical Laboratory Sciences	Diploma in Medical Lab. Technology (DMLT)	3 yrs.

## Programmes After (10+2) 12th Grade/(A Level)

Discipline	Programme Name	Duration
Engineering	B.Tech. (Electronics & Communication Engineering)	4 yrs.
Engineering	B Tech (ECE) [ 2+2 with international credit transfer option]	4 Years (2+2) 4 yrs.
Engineering	B.Tech (ECE - IOT)	4 yrs.
Engineering	B.Tech. (Computer Science & Engineering)	4 Years (2+2)
Engineering	B Tech (CSE) [ 2+2 with international credit transfer option]	4 yrs. 4 yrs.
Engineering	B.Tech. (CSE - Data Science (ML and AI))	4 yrs.
Engineering	B.Tech. (CSE - Cloud based DevOps Automation)	4 yrs.
Engineering	B.Tech. (CSE - User Experience (UX) / User Interface (UI))	4 yrs.
Engineering	B.Tech (CSE - Big Data Analytics)	4 yrs.
Engineering	B.Tech (CSE - Cloud Computing)	4 yrs.
Engineering	B.Tech. (Hons.) (CSE- Data Science & Data Engineering)	4 yrs.
Engineering	B.Tech. (Hons.) (CSE- Cyber Security and Block Chain)	4 yrs.
Engineering	B.Tech. (Hons.) (CSE- Full Stack Software Development)	4 yrs.
Engineering	B.Tech. (Information Technology)	4 Years (2+2)
Engineering	B.Tech. (Mechanical Engineering)	4 yrs.
Engineering	B Tech (ME) [2+2 with international credit transfer option]	4 Years (2+2) 4 yrs.
Engineering	B.Tech. (ME - Mechatronics)	4 yrs.
Engineering	B.Tech. (ME - Mechatronics) [2+2 with international credit transfer option]	4 yrs. 4 Years (2+2)
Engineering	B.Tech. (Aerospace Engineering)	4 yrs.
Engineering	B.Tech. (Civil Engineering)	4 yrs.
Engineering	B Tech (CE) [ 2+2 with international credit transfer option]	4 yrs. 4 yrs.
Engineering	B.Tech. (CE -Building Information Modeling)	
Engineering	B.Tech. (Electrical Engineering)	
Engineering	B.Tech. (Electrical and Electronics Engineering)	

Discipline	Programme Name	Duration
Engineering	B.Tech. (Robotics and Automation)	4 yrs.
Engineering	B.Tech. (Biotechnology)	4 yrs.
Engineering	B Tech (Biotechnology) [ 2+2 with international credit transfer option]	4 Years (2+2)
Engineering	B.Tech. (Food Technology)	4 yrs.
Engineering	B.Tech. (Biomedical Engineering)	4 yrs.
Engineering	B.Tech. (Automobile Engineering)	4 yrs.
Engineering	B.Tech. (Automobile Engineering) [ 2+2 with international transfer option]	4 Years (2+2)
Engineering	B.Tech. (Chemical Engineering)	4 yrs.
Computer Applications	BCA	3 yrs.
Computer Applications	BCA (Hons.)	3 yrs.
Computer Applications	BCA (Big Data Analytics)	3 yrs.
Computer Applications	B.Sc. (Hons.) Computer Science	3 yrs.
Computer Applications	B.Sc. (Information Technology)	3 yrs.
Computer Applications	B Sc (IT) [2+2 with international credit transfer option]	4 Years (2+2)
Agriculture	B.Sc. (Hons.) Agriculture	4 yrs.
Food Technology	B.Sc. (Hons.) Food Technology	3 yrs.
Nutrition & Dietetics	B.Sc. (Nutrition & Dietetics)	3 yrs.
Biotechnology	B.Sc. (Hons.) Biotechnology	3 yrs.
Microbiology	B.Sc. (Hons.) Microbiology	3 yrs.
Forensic Sciences	B.Sc. (Forensic Sciences)	3 yrs.
Botany	B.Sc. (Hons.) Botany	3 yrs.
Zoology	B.Sc. (Hons.) Zoology	3 yrs.
Physics	B.Sc. (Hons.) Physics	3 yrs.
Chemistry	B.Sc. (Hons.) Chemistry	3 yrs.
Mathematics	B.Sc. (Hons.) Mathematics	3 yrs.
Mathematics	B.Sc. (Hons.) Statistics	3 yrs.
Management	BBA	3 yrs.
Management	BBA [ 2+2 with international credit transfer option]	4 Years (2+2)
Management	Integrated BBA - MBA	4 yrs.
Management	BBA (Hons.)	3 yrs.
Management	BBA (Financial Markets)	3 yrs.
Management	BBA (Information Technology )	3 yrs.
Management	BBA (International Finance)	3 yrs.
Commerce	B.Com.	3 yrs.
Commerce	B.Com [ 2+2 with international credit transfer option]	4 Years (2+2)
Commerce	B.Com. (Hons.)	3 yrs.
Commerce	B.Com. (Management Accounting and International	3 yrs.
Economics	B.Sc. (Hons.) Economics Finance)	3 yrs.
Law	B.A., LL.B.(Hons.) {No exit/discontinue option after B.A.}	5 Yrs.
Law	BBA, LL.B. (Hons.) {No exit/discontinue option after BBA}	5 Yrs.

Discipline	Programme Name	Duration
Hotel Management & Tourism	B.Sc. (Airlines, Tourism & Hospitality)	3 yrs.
Hotel Management & Tourism	BBA (Tourism & Hospitality)	3 yrs.
Hotel Management & Tourism	BBA (Airlines and Airport Management)	3 yrs.
Hotel Management & Tourism	B.Sc. (Hotel Management)	3 yrs.
Hotel Management & Tourism	Bachelor of Hotel Mgt & Catering Technology (BHMCT)	4 yrs.
Hotel Management & Tourism	Bachelor of Hotel Mgt & Catering Technology (BHMCT) [ 2+2 with international credit transfer option]	4 Years (2+2)
Hotel Management & Tourism	B.A. (Culinary Arts)	3 yrs.
Hotel Management & Tourism	B.A. (Culinary Arts) [ 2+2 with international credit transfer option]	4 Years (2+2)
Architecture	B. Arch.	5 yrs.
Planning	B. Plan.	4 yrs.
Interior & Furniture Design	B.Sc. (Design - Interior & Furniture)	3 yrs.
Interior & Furniture Design	B.Design (Interior & Furniture)	4 yrs.
Product & Industrial Design	B.Design (Product & Industrial)	4 yrs.
Fashion Design	B.Sc. (Design - Fashion)	3 yrs.
Fashion Design	B.Design (Fashion)	4 yrs.
Fashion Design	B Design (Fashion) [ 2+2 with international credit transfer option]	4 Years (2+2)
Multimedia & Animation	B.Sc. (Design - Multimedia)	3 yrs.
Multimedia & Animation	B.Design (Multimedia)	4 yrs.
Multimedia & Animation	B.Sc. (Design - Gaming)	3 yrs.
Multimedia & Animation	B.Design (Gaming)	4 yrs.
Multimedia & Animation	B.Sc. (Design - Graphics)	3 yrs.
Multimedia & Animation	B.Design (Graphics)	4 yrs.
Fine Arts	B.A. (Fine Arts)	3 yrs.
Fine Arts	Bachelor of Fine Arts (BFA)	4 yrs.
Journalism & Film Production	B.A. (Journalism & Mass Communication)	3 yrs.
Journalism & Film Production	B.Sc. (Film & TV Production)	3 yrs.
Journalism & Film Production	B.Design (Film & TV Production)	4 yrs.
Library Science	Diploma in Library & Information Sciences (D. Lib.I.Sc.)	1 yr.
Performing Arts	B.A. (Music Vocal)	3 yrs.
Performing Arts	B.A. (Theatre)	3 yrs.
Performing Arts	BPA (Music Vocal)	4 yrs.
Performing Arts	BPA (Theatre)	4 yrs.
Arts (Humanities)	Bachelor of Arts (B.A.)	3 yrs.
Arts (Humanities)	B.A. (Hons.), English, Political Science, History Sociology, Geography, Psychology, Punjabi"	3 yrs.
Physical Education	B.Sc. (Health and Physical Education)	3 yrs.
Physical Education	Bachelor of Physical Education & Sports (BPES)	3 yrs.
Education	Integrated B.A. - B.Ed.	4 yrs.
Education	Integrated B.Sc. - B.Ed.	4 yrs.
Pharmaceutical Sciences	B.Pharm.	4 yrs.
Ayurvedic Pharmaceutical Sciences	B.Pharm. (Ayurveda)	4 yrs.
Physiotherapy	Bachelor of Physiotherapy (BPT)	4.5 yrs.
Medical Laboratory Sciences	B.Sc. (Medical Laboratory Technology)	3 yrs.

### Lateral Entry (Entry to 2ND Year) (Diploma Programme)

Discipline	Programme Name	Duration
Engineering	Diploma (Engg.) Electronics & Comm. Engg. (ECE)	2 yrs.
Engineering	Diploma (Engg.) Computer Sc. & Engg. (CSE)	2 yrs.
Engineering	Diploma (Engg.) Mechanical Engg. (ME)	2 yrs.
Engineering	Diploma (Engg.) Civil Engg. (CE)	2 yrs.

### Lateral Entry (Entry to 2ND Year) (Under Graduation Programme)

Discipline	Programme Name	Duration
Engineering	B.Tech. (Electronics & Communication Engineering)	3 yrs.
Engineering	B.Tech. (Computer Science & Engineering)	3 yrs.
Engineering	B.Tech. (Information Technology)	3 yrs.
Engineering	B.Tech. (Mechanical Engineering)	3 yrs.
Engineering	B.Tech. (ME - Mechatronics)	3 yrs.
Engineering	B.Tech. (Civil Engineering)	3 yrs.
Engineering	B.Tech. (Electrical Engineering)	3 yrs.
Engineering	B.Tech. (Electrical and Electronics Engineering)	3 yrs.
Engineering	B.Tech. (Robotics and Automation)	3 yrs.
Engineering	B.Tech. (Biotechnology)	3 yrs.
Engineering	B.Tech. (Food Technology)	3 yrs.
Engineering	B.Tech. (Automobile Engineering)	3 yrs.
Engineering	B.Tech. (Aerospace Engineering)	3 yrs.
Engineering	B.Tech. (Chemical Engineering)	3 yrs.
Engineering	B.Tech. (Biomedical Engineering)	3 yrs.
Computer Applications	BCA	2 yrs.
Computer Applications	B.Sc. (Information Technology)	2 yrs.
Management	BBA	2 yrs.
Commerce	B.Com.	2 yrs.
Hotel Management & Tourism	B.Sc. (Hotel Management)	2 yrs.
Hotel Management & Tourism	Bachelor of Hotel Mgt & Catering Technology	3 yrs.
Hotel Management & Tourism	B.Sc. (Airlines, Tourism & Hospitality)	2 yrs.
Architecture	Diploma in Architectural Assistantship	2 yrs.
Interior & Furniture Design	B.Sc. (Design - Interior & Furniture)	2 yrs.
Interior & Furniture Design	B.Design (Interior & Furniture)	3 yrs.
Product & Industrial Design	B.Design (Product & Industrial)	3 yrs.
Fashion Design	B.Sc. (Design - Fashion)	2 yrs.
Fashion Design	B.Design (Fashion)	3 yrs.
Pharmaceutical Sciences	B.Pharm.	3 yrs.
Physiotherapy	Bachelor of Physiotherapy (BPT)	3.5 yrs.
Medical Laboratory Sciences	B.Sc. (Medical Laboratory Technology)	2 yrs.



## Programmes After Graduation

Discipline	Programme Name	Duration	Discipline	Programme Name	Duration
Management	MBA	2 yrs. (8 Modules)	Physical Education	M.P.Ed.	2 yrs.
Management	MBA (Hons.)	2 yrs. (8 Modules)	Engineering (ECE)	M.Tech. (Electronics & Communication Engineering)	2 yrs.
Management	MBA [1+1 with international credit transfer option]	2 Years (1+1)	Engineering (ECE)	M tech (ECE) [1+1 with international credit transfer option]	2 Years (1+1)
Management	MBA (International Business)	2 yrs. (8 Modules)	Engineering (ECE)	M.Tech. (VLSI Design) [Full Time]	2 yrs.
Management	MBA (Hospital & Healthcare Management)	2 yrs. (8 Modules)	Engineering (CSE)	M.Tech. (Computer Science and Engineering)	2 yrs.
Management	MBA (Business Analytics)	2 yrs. (8 Modules)	Engineering (CSE)	M.Tech. (Machine Learning and Artificial Intelligence)	2 yrs.
Management	MBA (Supply Chain & Logistics)	2 yrs. (8 Modules)	Engineering (CSE)	M.Tech. (Data Science and Analytics)	2 yrs.
Management	MBA (Financial Markets)	2 yrs. (8 Modules)	Engineering (CSE)	M.Tech. (Information Security and Cyber Forensics)	2 yrs.
Management	MBA with Talent Edge	2 yrs. (8 Modules)	Engineering (ME)	M.Tech. (Thermal Engineering)	2 yrs.
Commerce	M.Com.	2 yrs.	Engineering (ME)	M.Tech. (Automobile Engineering)	2 yrs.
Economics	M.Sc. (Hons.) Economics	2 yrs.	Engineering (ME)	M.Tech. (Robotics) [Full Time]	2 yrs.
Law	LL.B.	3 yrs.	Engineering (CE)	M.Tech. (Structural Engineering)	2 yrs.
Law	LL.M.	2 yrs.	Engineering (CE)	M.Tech. (Geotechnical Engineering)	2 yrs.
Hotel Management & Tourism	MBA (Tourism and Hospitality)	2 yrs.	Engineering (CE)	M.Tech. (Transportation Engineering)	2 yrs.
Hotel Management & Tourism	M.Sc. (Hotel Management)	2 yrs.	Engineering (CE)	M.Tech. (Construction Management)	2 yrs.
Architecture	M.Arch. (Executive) [Part Time]	3 yrs.	Engineering (EE)	M.Tech. (Power Systems)	2 yrs.
Planning	M. Plan.	2 yrs.	Engineering	M.Tech. (Food Technology)	2 yrs.
Interior & Furniture Design	M.Sc. (Design -Interior & Furniture)	2 yrs.	Engineering	M.Tech. (Biotechnology)	2 yrs.
Interior & Furniture Design	M.Design (Interior & Furniture)	2 yrs.	Engineering	M Tech (Biotechnology) [1+1 with international credit transfer option]	2 Years (1+1)
Product & Industrial Design	M.Design (Product & Industrial)	2 yrs.	Computer Applications	MCA	2 yrs.
Fashion Design	M.Design (Fashion)	2 yrs.	Computer Applications	M.Sc. (Information Technology)	2 yrs.
Fashion Design	M.Sc. (Design - Fashion)	2 yrs.	Agriculture	M.Sc. Ag. (Agronomy)	2 yrs.
Multimedia & Animation	M.Design (Multimedia)	2 yrs.	Agriculture	M.Sc. Ag. (Soil Science and Agriculture Chemistry)	2 yrs.
Multimedia & Animation	M.Sc. (Design - Multimedia)	2 yrs.	Agriculture	M.Sc. Ag. (Genetics & Plant Breeding)	2 yrs.
Fine Arts	Master of Fine Arts (MFA)	2 yrs.	Agriculture	M.Sc. Ag. (Entomology)	2 yrs.
Journalism & Film Production	M.A. (Journalism & Mass Communication)	2 yrs.	Agriculture	M.Sc. Ag. (Plant Pathology)	2 yrs.
Journalism & Film Production	M.Sc. (Film and TV Production)	2 yrs.	Agriculture	M.Sc. Ag. Horticulture (Vegetable Science)	2 yrs.
Performing Arts	Master of Performing Arts (MPA)	2 yrs.	Agriculture	M.Sc. Ag. Horticulture (Fruit Science)	2 yrs.
Performing Arts	M.A. (Theatre and Television)	2 yrs.	Agriculture	M.Sc. Ag. Horticulture (Floriculture and Landscaping)	2 yrs.
History	M.A. (History)	2 yrs.	Food Technology	M.Sc. (Food Science & Technology)	2 yrs.
Psychology	M.A. (Psychology)	2 yrs.	Nutrition & Dietetics	M.Sc. (Nutrition & Dietetics)	2 yrs.
Psychology	M.A. (Clinical Psychology)	2 yrs.	Biotechnology	M.Sc. (Hons.) Biotechnology	2 yrs.
Sociology	M.A. (Sociology)	2 yrs.	Microbiology	M.Sc. (Hons.) Microbiology	2 yrs.
Political Science	M.A. (Political Science)	2 yrs.	Forensic Sciences	M.Sc. (Forensic Sciences)	2 yrs.
Public Administration	M.A. (Public Administration)	2 yrs.	Botany	M.Sc. (Hons.) Botany	2 yrs.
Geography	M.Sc. (Geography)	2 yrs.	Zoology	M.Sc. (Hons.) Zoology	2 yrs.
English & Foreign Languages	M.A. (English)	2 yrs.	Physics	M.Sc. (Hons.) Physics	2 yrs.
Library Science	Bachelor of Library & Information Sciences	1 yr.	Chemistry	M.Sc. (Hons.) Chemistry	2 yrs.
Library Science	Master of Library & Information Sciences	1 yr.	Mathematics	M.Sc. (Hons.) Mathematics	2 yrs.
Indian Languages	M.A. (Hindi)	2 yrs.	Mathematics	M.Sc. (Statistics and Data Analytics)	2 yrs.
Indian Languages	M.A. (Punjabi)	2 yrs.	Pharmaceutical Sciences	M.Pharm. (Pharmaceutics)	2 yrs.
Education	B.Ed.	2 yrs.	Pharmaceutical Sciences	M.Pharm. (Pharmacology)	2 yrs.
Education	M.Ed.	2 yrs.	Pharmaceutical Sciences	M.Pharm. (Pharmaceutical Analysis)	2 yrs.
Education	Integrated B.Ed.-M.Ed.	3 yrs.	Pharmaceutical Sciences	M.Pharm. (Pharmaceutical Chemistry)	2 yrs.
Education	M.A. (Education)	2 yrs.	Pharmaceutical Sciences	M.Pharm. (Pharmacy Practice)	2 yrs.
Physical Education	B.P.Ed.	2 yrs.			

Discipline	Programme Name	Duration
Ayurvedic Pharmaceutical Sciences	M.Pharm. (Ayurveda)	2 yrs.
Physiotherapy	MPT (Orthopedics)	2 yrs.
Physiotherapy	MPT (Neurology)	2 yrs.
Physiotherapy	MPT (Cardiopulmonary)	2 yrs.
Medical Laboratory Sciences	M.Sc. (Clinical Microbiology)	2 yrs.
Medical Laboratory Sciences	M.Sc. (Clinical Biochemistry)	2 yrs.
Medical Laboratory Sciences	M.Sc. (Clinical Embryology)	2 yrs.

### Programmes After Post Graduation - Ph.D. (Min. duration 3 years)

Discipline	Programme Name	Duration
Engineering	Ph.D. (Electronics & Communication Engineering) [Full Time]	3 yrs.
Engineering	Ph.D. (Electronics & Communication Engineering) [Part Time]	3 yrs.
Engineering	Ph.D. (Computer Science & Engineering) Full Time]	3 yrs.
Engineering	Ph.D. (Computer Science & Engineering) [Part Time]	3 yrs.
Engineering	Ph.D. (Electrical Engineering) [Full Time]	3 yrs.
Engineering	Ph.D. (Electrical Engineering) [Part Time]	3 yrs.
Engineering	Ph.D. (Mechanical Engineering) [Full Time]	3 yrs.
Engineering	Ph.D. (Mechanical Engineering) [Part Time]	3 yrs.
Engineering	Ph.D. (Civil Engineering) [Full Time]	3 yrs.
Engineering	Ph.D. (Civil Engineering) [Part Time]	3 yrs.
Engineering	Ph.D. (Chemical Engineering) [Full Time]	3 yrs.
Engineering	Ph.D. (Chemical Engineering) [Part Time]	3 yrs.
Engineering	Ph.D. (Molecular Biology and Genetic Engineering) [Full Time]	3 yrs.
Engineering	Ph.D. (Molecular Biology and Genetic Engineering) [Part Time]	3 yrs.
Geospatial Information Science and Technology	Ph.D. (Geospatial Information Science and Technology) [Full Time]	3 yrs.
Geospatial Information Science and Technology	Ph.D. (Geospatial Information Science and Technology) [PartTime]	3 yrs.
Computer Applications	Ph.D. (Computer Applications) [Full Time]	3 yrs.
Computer Applications	Ph.D. (Computer Applications) [Part Time]	3 yrs.
Engineering	Ph.D. (Aerospace Engineering) [Full Time]	3 yrs.
Engineering	Ph.D. (Aerospace Engineering) [Part Time]	3 yrs.
Agriculture	Ph.D (Agronomy) [Full Time]	3 yrs.
Agriculture	Ph.D. (Entomology) [Full Time]	3 yrs.
Agriculture	Ph.D. Horticulture (Fruit Science)[Full Time]	3 yrs.
Agriculture	Ph.D. (Genetics and Plant Breeding) [Full Time]	3 yrs.
Agriculture	Ph.D. (Plant Pathology) [Full Time]	3 yrs.
Agriculture	Ph.D. Horticulture (Vegetable Science) [Full Time]	3 yrs.
Agriculture	Ph.D. (Soil Science and Agriculture Chemistry) [Full Time]	3 yrs.
Food Technology	Ph.D. (Food Science and Technology) [Full Time]	3 yrs.
Bioinformatics	Ph.D. (Bioinformatics) [Full Time]	3 yrs.

Discipline	Programme Name	Duration
Bioinformatics	Ph.D. (Bioinformatics) [Part Time]	3 yrs.
Microbiology	Ph.D. (Biochemistry) [Full Time]	3 yrs.
Microbiology	Ph.D. (Biochemistry) [Part Time]	3 yrs.
Biochemistry	Ph.D. (Botany) [Full Time]	3 yrs.
Biochemistry	Ph.D. (Botany) [Part Time]	3 yrs.
Botany	Ph.D. (Zoology) [Full Time]	3 yrs.
Botany	Ph.D. (Zoology) [Part Time]	3 yrs.
Zoology	Ph.D. (Chemistry) [Full Time]	3 yrs.
Zoology	Ph.D. (Chemistry) [Part Time]	3 yrs.
Chemistry	Ph.D. (Physics) [Full Time]	3 yrs.
Chemistry	Ph.D. (Physics) [Part Time]	3 yrs.
Physics	Ph.D. (Mathematics) [Full Time]	3 yrs.
Physics	Ph.D. (Mathematics) [Part Time]	3 yrs.
Mathematics	Ph.D. (Management) [Full Time]	3 yrs.
Mathematics	Ph.D. (Management) [Part Time]	3 yrs.
Management	Ph.D.(Commerce) [Full Time]	3 yrs.
Management	Ph.D.(Commerce) [Part Time]	3 yrs.
Commerce	Ph.D. (Economics) [Full Time]	3 yrs.
Commerce	Ph.D. (Economics) [Part Time]	3 yrs.
Economics	Ph.D. (Tourism Management) [Full Time]	3 yrs.
Economics	Ph.D. (Tourism Management) [Part Time]	3 yrs.
Hotel Management & Tourism	Ph.D. (Law) [Full Time]	3 yrs.
Hotel Management & Tourism	Ph.D. (Law) [Part Time]	3 yrs.
Law	Ph.D. (Planning) [Full Time]	3 yrs.
Law	Ph.D. (Planning) [Part Time]	3 yrs.
Planning	Ph.D. (Design) [Full Time]	3 yrs.
Planning	Ph.D. (Design) [Part Time]	3 yrs.
Design	Ph.D. (Journalism and Mass Communication) [Full Time]	3 yrs.
Design	Ph.D. (Journalism and Mass Communication) [Part Time]	3 yrs.
Journalism & Film Production	Ph.D. (Performing Arts-Music) [Full Time]	3 yrs.
Journalism & Film Production	Ph.D. (Performing Arts-Music) [Part Time]	3 yrs.
Performing Arts	Ph.D. (Performing Arts-Theatre) [Full Time]	3 yrs.
Performing Arts	Ph.D. (Performing Arts-Theatre) [Part Time]	3 yrs.
Performing Arts	Ph.D. (Psychology) [Full Time]	3 yrs.
Performing Arts	Ph.D. (Psychology) [Part Time]	3 yrs.
Psychology	Ph.D. (Sociology) [Full Time]	3 yrs.
Psychology	Ph.D. (Sociology) [Part Time]	3 yrs.
Sociology	Ph.D. (History) [Full Time]	3 yrs.
Sociology	Ph.D. (History) [Part Time]	3 yrs.
History	Ph.D. (Hindi) [Full Time]	3 yrs.
History	Ph.D. (Hindi) [Part Time]	3 yrs.
Indian Languages	Ph.D. (Education) [Full Time]	3 yrs.
Indian Languages	Ph.D. (Education) [Part Time]	3 yrs.
Education	Ph.D. (Physical Education) [Full Time]	3 yrs.
Education	Ph.D. (Physical Education) [Part Time]	3 yrs.
Physical Education	Ph.D. (Physical Education) [Full Time]	3 yrs.
Physical Education	Ph.D. (Physical Education) [Part Time]	3 yrs.
Indian Languages	Ph.D. (Punjabi) [Full Time]	3 yrs.
Indian Languages	Ph.D. (Punjabi) [Part Time]	3 yrs.



#### Discipline

- Pharmaceutical Sciences
- Pharmaceutical Sciences
- Pharmaceutical Sciences
- Pharmaceutical Sciences
- Pharmaceutical Sciences
- Pharmaceutical Sciences
- Pharmaceutical Sciences
- Pharmaceutical Sciences
- Pharmaceutical Sciences
- Pharmaceutical Sciences
- Ayurvedic Pharmaceutical Sciences
- Ayurvedic Pharmaceutical Sciences
- Physiotherapy
- Physiotherapy
- Medical Laboratory Sciences
- Medical Laboratory Sciences
- Medical Laboratory Sciences
- Medical Laboratory Sciences

#### Programme Name

- Ph.D. (Pharmaceutics) [Full Time]
- Ph.D. (Pharmaceutics) [Part Time]
- Ph.D. (Pharmaceutical Chemistry) [Full Time]
- Ph.D. (Pharmaceutical Chemistry) [Part Time]
- Ph.D. (Pharmacognosy) [Full Time]
- Ph.D. (Pharmacognosy) [Part Time]
- Ph.D. (Pharmacology) [Full Time]
- Ph.D. (Pharmacology) [Part Time]
- Ph.D. (Pharmacy Practice) [Full Time]
- Ph.D. (Pharmacy Practice) [Part Time]
- Ph.D. (Ayurvedic Pharmacy) [Full Time]
- Ph.D. (Ayurvedic Pharmacy) [Part Time]
- Ph.D. (Physiotherapy) [Full Time]
- Ph.D. (Physiotherapy) [Part Time]
- Ph.D. (Clinical Microbiology) [Full Time]
- Ph.D. (Clinical Microbiology) [Part Time]
- Ph.D. (Clinical Biochemistry) [Full Time]
- Ph.D. (Clinical Biochemistry) [Part Time]

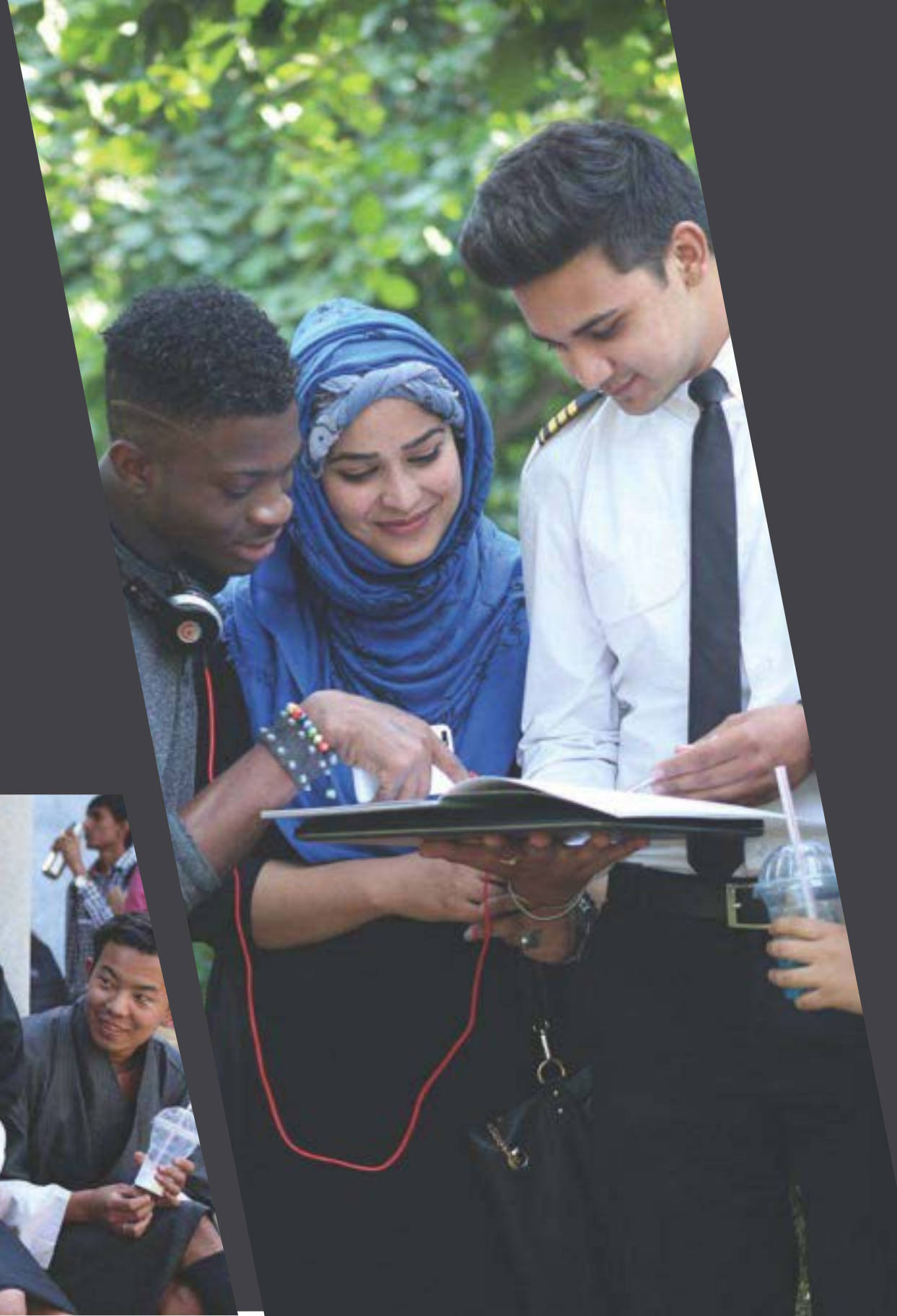
#### Duration

- 3 yrs.
- 3 yrs.
- 3 yrs.
- 3 yrs.
- 3 yrs.
- 3 yrs.
- 3 yrs.
- 3 yrs.
- 3 yrs.
- 3 yrs.
- 3 yrs.
- 3 yrs.
- 3 yrs.
- 3 yrs.
- 3 yrs.
- 3 yrs.
- 3 yrs.

## UPTO 50% SCHOLARSHIP\*

\*to check your scholarship, visit  
<http://www.lpu.in/international/scholarship.php>

Scan QR code





# BY THE STUDENTS, FOR THE STUDENTS

AT LPU OUR STUDENTS HAVE THE HIGHEST LEVEL OF SATISFACTION AMONG ALL THE UNIVERSITIES IN INDIA



“

LPU is one of the most well-renowned institutions in the world. After experiencing the course here, I can see why because the teaching is great.

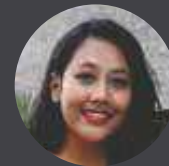
**FU JIAQI  
(CHINA)**



“

I have been proved right in selecting LPU for my higher academic pursuits! Learning internationally bench-marked lessons through related audio-visuals, brain storming sessions and many modern techniques, I am growing differently at LPU.

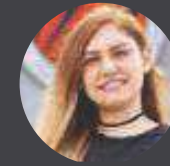
**MS. RATTIKARAN  
(THAILAND)**



“

Right from the time I started researching colleges across the country during my high school studies, LPU was among those I was targeting. After my journey here, I am proud to be a member of LPU.

**BARSHA MANANDHAR  
(NEPAL)**



“

For me, Life at LPU has been breath-taking and enriching. The environment not only helped me in imbibing knowledge but also in developing my overall personality, fueling confidence in me.

**GABRIELA MEJIAS  
(VENEZUELA)**



“

LPU accommodation is an international residence where students from 70 countries reside. It gives me a sense of community, a sense of big family.

**TARIQ ALLY  
(TANZANIA)**



“

LPU is not only a university but a big city in itself. I rarely have to go out of the campus for anything. I love life at LPU.

**JOANNA  
ROBACZEWSKA  
(UK)**



“

My parents were worried about my maiden journey to a foreign land. However, right from landing at air-port to induction programme, and on varied needs, I got prompt support from all the officers of International Department of LPU.

**AGATHA, SIEVU  
(ZAMBIA)**



“

The way that LPU is set up has made it really easy to meet new people. There's a lot more collaboration within the class, and that's led to me meeting a lot of really interesting people from a lot of different places.

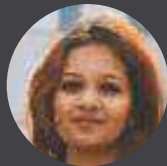
**FU JIAQI  
(CHINA)**



“

The professors are extremely passionate about what they do and want me to be better. The staff and students really care about me, and I am respected and appreciated for my opinions.

**KINLEY PENJOR  
(BHUTAN)**



“

The very international nature of students on the campus has been a major plus in terms of making new friends from different countries and cultures.

**MILKAH  
(SRI LANKA)**



“

The course are designed in a manner that learning is not limited. I am gaining lot of knowledge through my program. The assignments are really good as it help the students to think out-of-the box and answer.

**ERIC SAKORDIE  
(GHANA)**



“

The training and industry interaction organized by LPU were very helpful in shaping our Practical knowledge, Public Speaking as well as Communication skills. Overall, they shaped us for everything that the company was looking for, resulting to such a good job offers.

**SAIKAT DEY  
(BANGLADESH)**



**L** OVELY  
**P** ROFESSIONAL  
**U** NIVERSITY

*Transforming Education Transforming India*

## COUNSELLING FORM

Name of Student:			
Programme of Interest:			
Duration of Programme:	Years	Semester	
Tuition Fee:	Annual	Semester	
Scholarship:			
Tuition Fee After Scholarship:	Annual	Semester	
Residential Fee* (Optional):			
Food And Laundry Fee* (Optional):	Indian	Continental	
Admission Processing Fee:			
Approximate Total Annual Fee:			
Approximate total annual fee in local currency:			
Session Beginning Date:	3rd week of July 20__		
English Language Programme (If Applied For):			

OTHER INFORMATION	
Approximate VISA Fee	
Approximate Air Fare	

PAYMENT SCHEDULE	
ODD SEMESTER	APRIL
EVEN SEMESTER	NOVEMBER

### SUPPORT OFFICE

Counselled by :

Date: \_\_\_\_\_

Details mentioned above are only for the counselling purpose. Please refer the university website [www.lpu.in](http://www.lpu.in) or authentic documents issued by LPU.

Whatsapp : +919780005961, +919855322332 | E-mail: [Int.admissions@lpu.co.in](mailto:Int.admissions@lpu.co.in)





# Visit us @ **LPU**

LOVELY PROFESSIONAL UNIVERSITY (LPU)  
Jalandhar-Delhi G.T.Road, Phagwara  
Punjab (India) 144411

Email: [int.admissions@lpu.co.in](mailto:int.admissions@lpu.co.in)

Whatsapp: +91-9780005961  
(For Nepal/ Bhutan/ Sri Lanka/ Bangladesh)

Whatsapp: +91-9855322332  
(For all other Countries)

Ph: +91 1824-444019  
Website: [www.lpu.in/international](http://www.lpu.in/international)



**L** OVELY  
**P** ROFESSIONAL  
**U** NIVERSITY

*Transforming Education Transforming India*